

SL720 Mobile Linear Position Sensor

Increased Stroke Length Delivered at a Reduced Cost

72"



Introducing the SL720, CPI's newest Mobile Linear Position Sensor for hydraulic cylinders. SL Series sensors are based on a patented technology that couples the translation of a hydraulic cylinder to a non-contacting sensor element. With an increased maximum sensing range of 72" (up from the SL200's 48"), these sensors are more robust than any other internally mounted sensor available today. Utilizing an extremely accurate non-contacting core sensor, the SL720 provides long life without any degradation in performance.

Sensor resides completely inside of cylinder

No core drilling of rod required

Non-contacting LVIT* sensor technology

No end-of-stroke dead zone

No lower limit to cylinder bore size

Virtually immune to shock and vibration, regardless of stroke

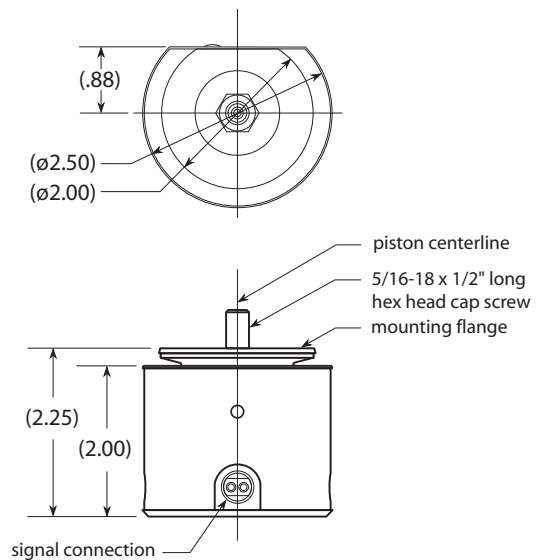
One part can be used for any stroke length - same low cost

Hammer-proof high pressure electrical connection

Can be used in telescoping cylinders

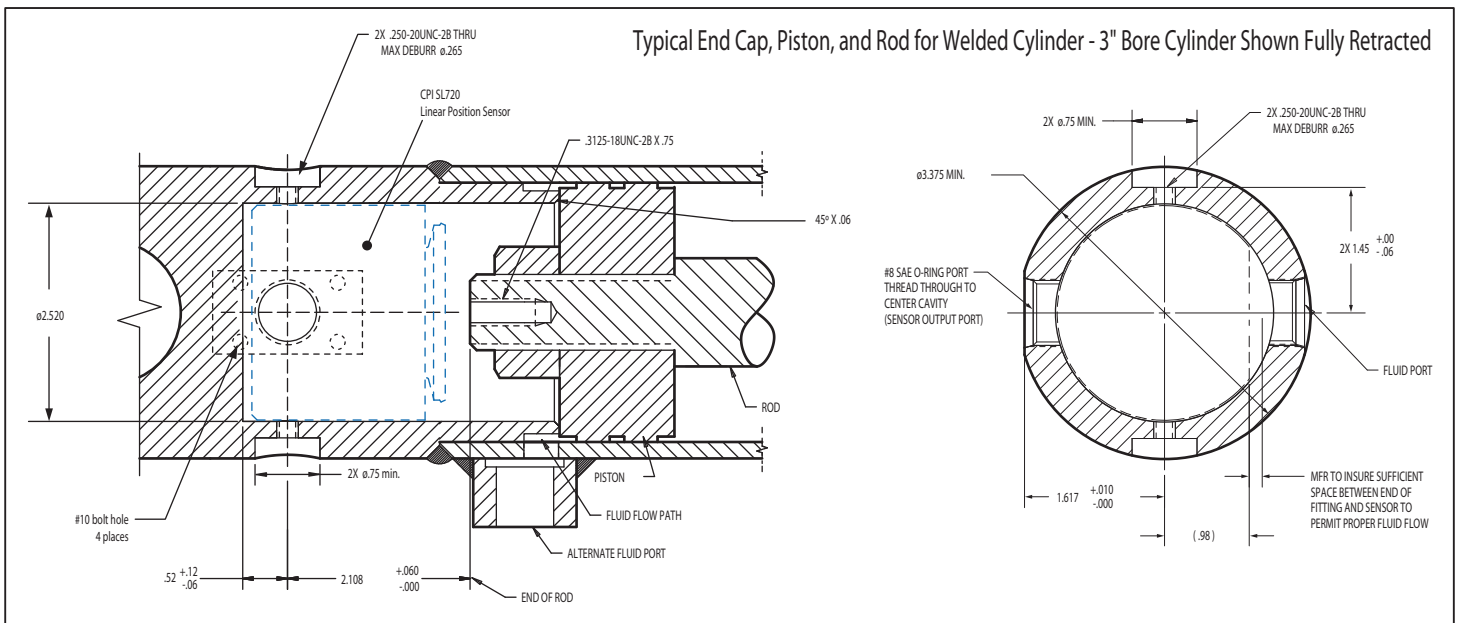
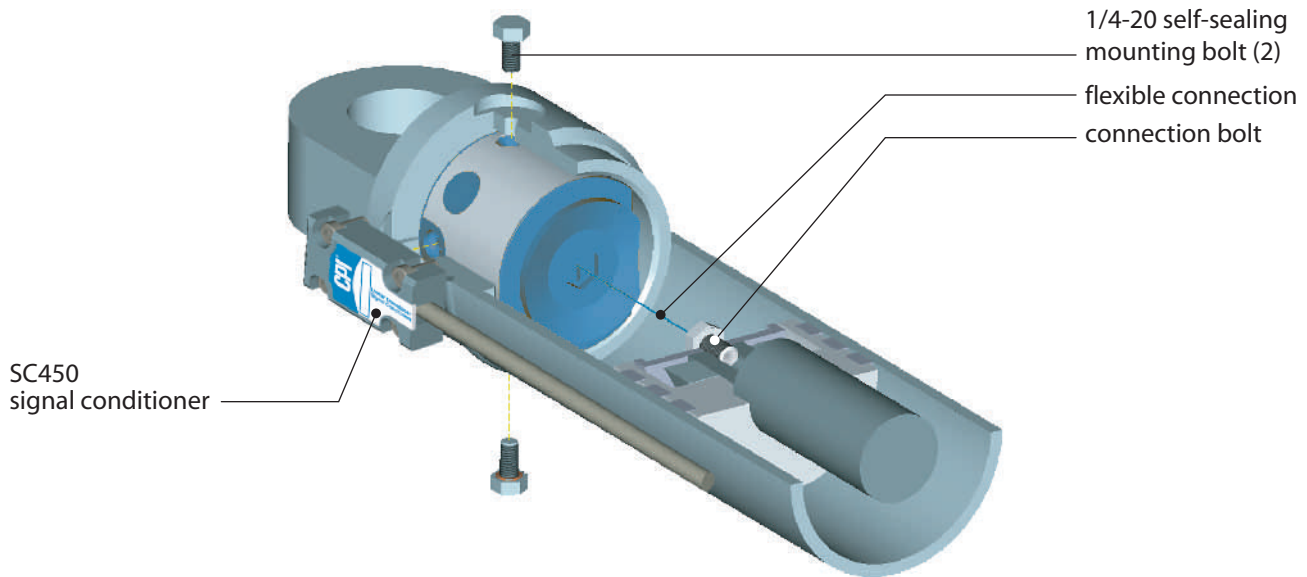
Easily integrated into high-volume hydraulic cylinder production

**Linear Variable Inductive Transformer*



Sensor & Signal Conditioner Specifications

Measuring Range:	0" to 72"	Shock:	50g, 6ms, sawtooth
Resolution:	±.050"	Vibration:	5g, 10Hz to 2kHz
Repeatability:	.025	Pressure	
Non-linearity:	2% of full scale	Operating:	5,000 psi
Hysteresis:	TBD	Spike:	10,000 psi
Input Voltage:	+12 to +24	Endurance:	1 million full-stroke cycles
Input Current:	1 milliamp (max.)	Overvoltage Protection:	per ASAE EP455
Output Voltage:	0-5 VDC	Reverse Polarity:	per ASAE EP455
Operating Temperature		Recommended	
Sensor:	-40°C to 105°C (-40°F to 221°F)	Cleanliness Level:	ISO 19/18/15
Signal Conditioner:	-40°C to 85°C (-40°F to 185°F)	Cold Oil Performance	
EMC		Delo 400 (MIL-PRF-46167):	1 ft. retraction <1/2 second @ 0°F 3 seconds @ -25°F 24 seconds @ -50°F
Emissions:	TBD		
Immunity:	TBD		



Higher Pressure Connector and Signal Conditioner

All the signal-conditioning electronics are integral with the high-pressure connector assembly. A standard vehicle bus voltage (12-24VDC) powers the sensor through the SC450 signal conditioner, which provides the 0-5VDC output. Housed in a stainless steel casting, the SC450 is completely sealed from the environment and comes standard with a 24" shielded cable (interconnect to be specified by customer). The signal conditioner attaches to the cylinder using four #10 bolts.



Control Products, Inc.
E. Hanover, NJ

Ph: (973) 887-9400
Fx: (973) 887-5083

