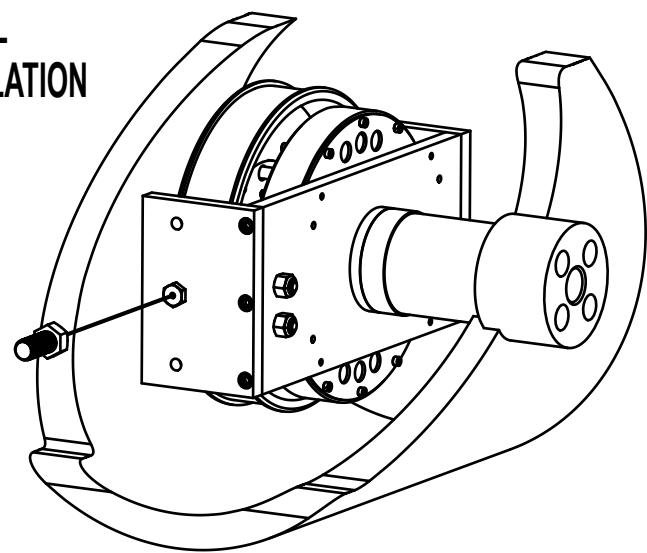
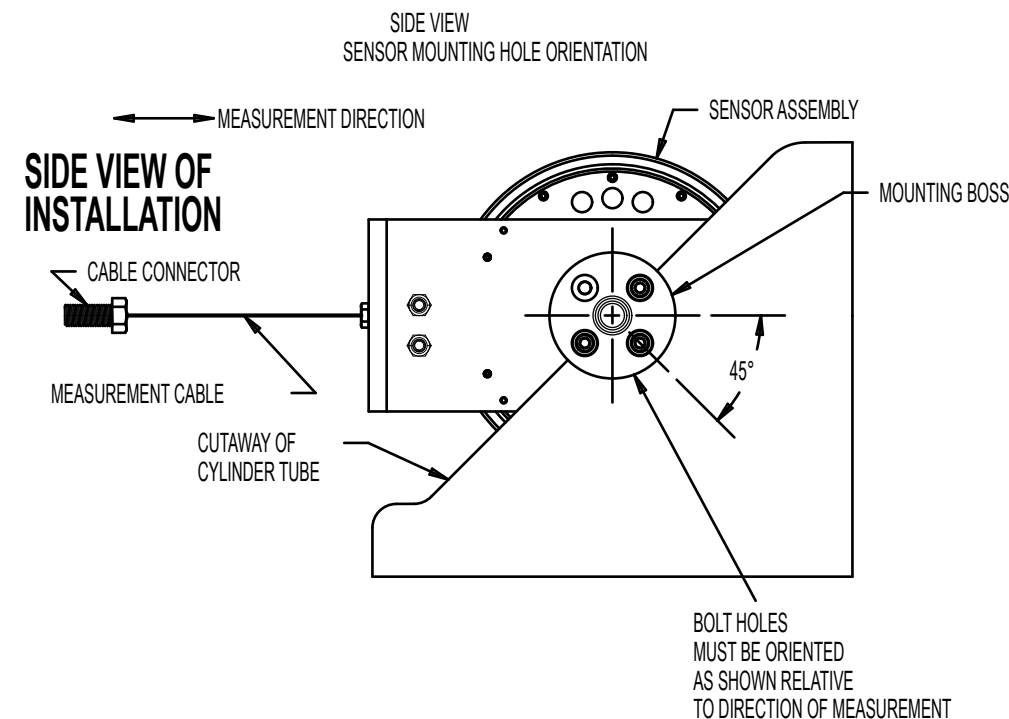
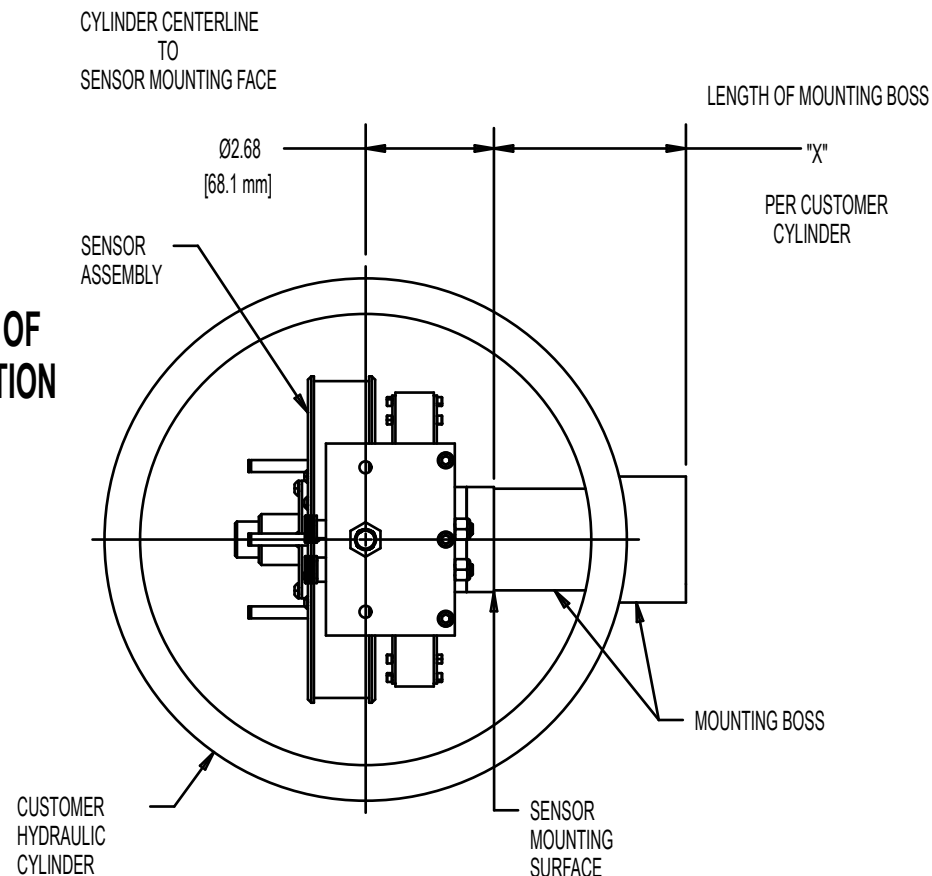


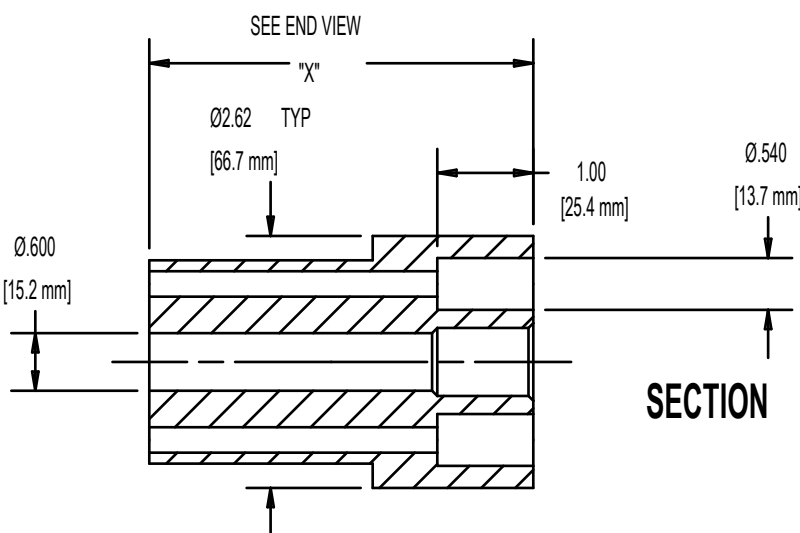
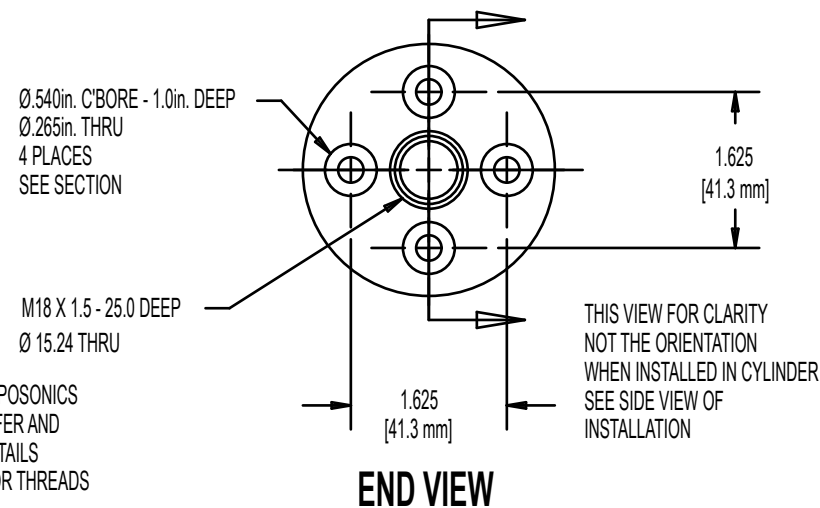
CUTAWAY PERSPECTIVE TYPICAL INSTALLATION



END VIEW OF INSTALLATION



MOUNTING BOSS DETAILS



THIS INSTALLATION IS INTENDED FOR USE WITH (4) 1/4-28 BOLTS AND HIGH-PRESSURE SEALING WASHERS.

CONSULT CPI FOR CORRECT BOLT LENGTH FOR YOUR SPECIFIC APPLICATION

CONSULT MTS TEMPOSONICS FOR O-RING CHAMFER AND THREAD-ENTRY DETAILS FOR 18 x 1.5 SENSOR THREADS

3/4-16 THREAD CONFIGURATIONS ARE BASED ON SAE J1926 PORT

UNLESS OTHERWISE SPECIFIED DIMENSIONS ARE IN INCHES					APPROVALS		DATE	CPI CONTROL PRODUCTS, INC. EAST HANOVER, NEW JERSEY WWW.CPI-NJ.COM	
TOLERANCES ARE:					DRAWN	ROG	2/14/17	TITLE 10 METER HYBRID LINEAR SENSOR TYPICAL INSTALLATION IN CYLINDER	
REV DESCRIPTION DATE BY APP					CHECKED				
MATERIAL					ISSUED	ECN6665			
REVISIONS					FINISH AND HEAT TREAT		DO NOT SCALE DRAWING		SIZE B
THE INFORMATION FURNISHED HEREIN IS THE PROPERTY OF CONTROL PRODUCTS, INC. AND SHALL NOT BE USED, DISCLOSED TO OTHERS, OR COPIED WITHOUT THE EXPRESS WRITTEN CONSENT OF CONTROL PRODUCTS, INC.							SCALE NONE	DRAWING NO. ES-I-176	SHEET 1 OF 1